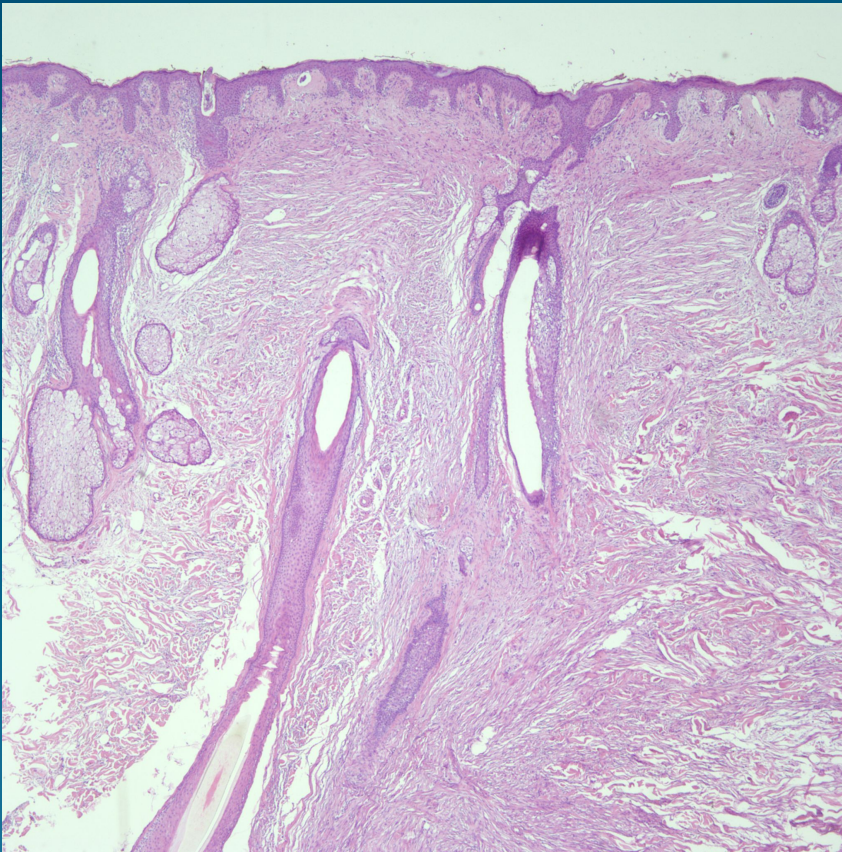


What is the best diagnosis?

- A. Sclerosing basal cell carcinoma
- B. Scleromyxedema
- C. Cellular blue nevus
- D. Desmoplastic melanoma
- E. Cutaneous schwannoma

Desmoplastic Malignant Melanoma

Pearls



- Spindle cell neoplasm with variable cellularity in slightly myxoid background and solar elastosis
- Epidermis variable with atrophy to areas of atypical junctional melanocytes
- Patchy nodular lymphocytic infiltrates
- Melanin pigmentation scant to absent
- Mitotic figures usually low
- Perineural invasion common
- Spindle cells usually bland or with minimal to focally moderate atypia
- Difficult cases may need IHC confirmation. Beware, tumors are S100 positive but usually MelanA/HMB45 negative